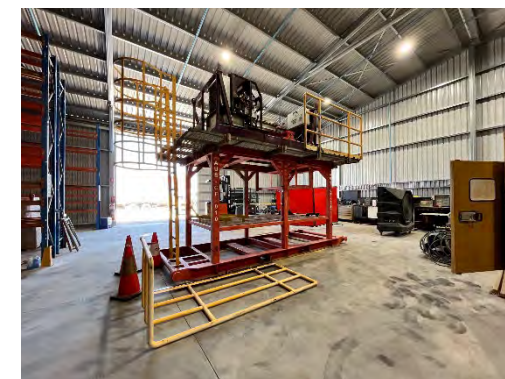




HIRE

FROM US

08 6454 0284
0499 144 077 (Graeme)
0405 439 787 (Travis)



exee.com.au/ex-rentals/

08 6454 0284

info@exee.com.au

EXE RENTALS

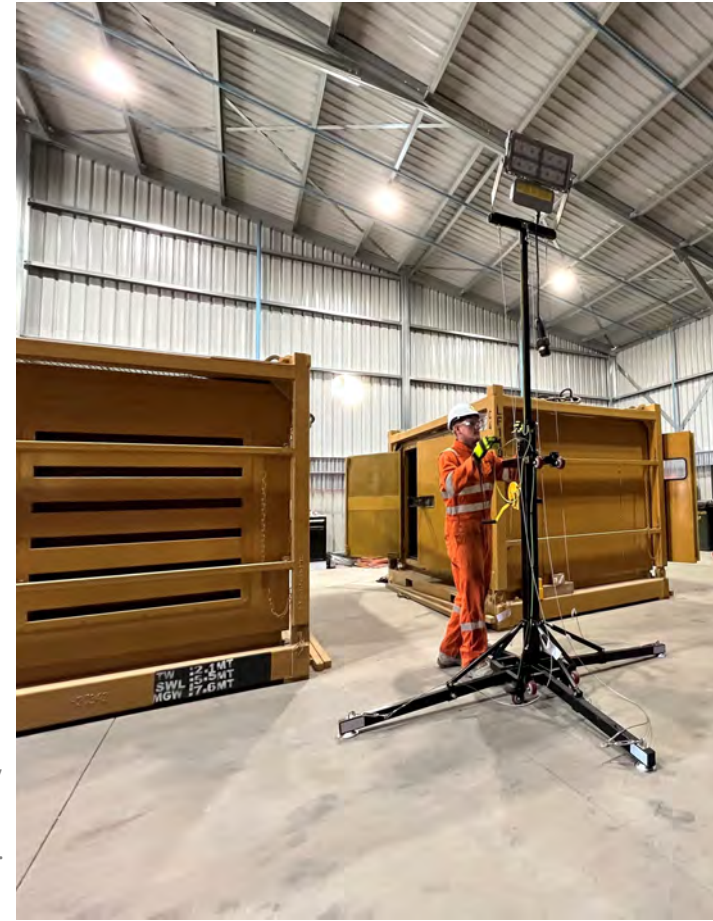


HIRE US

WELCOME NOTE & CONTENT

1. Hazardous AREA (Zone 2) equipment.
2. Containers & Tanks.
3. Generators (Power distribution).
4. Solid Controls & Mud Mixing.
5. Cable Hauling Equipment, reelers/spoolers.
6. Pumps, Washers & Air Compressors.
7. Transformers & Transformer Containers.
8. Small lighting & Power.
9. Forklifts & Spooler truck.
10. Vacuum units.

This brochure gives a sample of what we have available in our rental fleet. Ex Electrical & Engineering has an extensive inventory of equipment, locally, that can be mobilized to your site with a phone call within hours. We also provide customized solutions, assembling systems according to your needs. Our company is 100% Australian owned.



HAZARDOUS AREA EQUIPMENT (Zone 2)



**DIESEL GENERATOR
80kVA/50Hz
ZONE 2 RATED**

Rated at 80kVA @ 0.8PF diesel driven generator at 400V, 50Hz, 3 phase for ZONE 2 – Temperature Class T3 and Gas Group IIA



**AIR COMPRESSOR ZONE 2
185CFM**

DNV GL ST E271 Certified Enclosure & Certified Slings
Zone II IIB T3 Hazardous Area Operation
Zone II Compliance by DNV GL
Delivered Flow - 185 SCFM
Delivered Pressure (psi) - 100-110 psig
Dimensions: 2600mm x 1500mm x 1800mm



**AIR COMPRESSOR
190CFM
ZONE 2 RATED**

DNV-ST-E271" 2.7-1 Lifting Skid
Dimensions: 240cm x 113cm x 175cm
Flow 190-250cfm. Fuel Tank: 320L
Working Pressure 120psig



**DIESEL GENERATOR
30KVA
ZONE 2 RATED**

30kVA 50Hz 400V
ATEX 3G ZONE2 T3 200C
Rated at 80kVA @ 0.8PF diesel driven generator at 400V, 50Hz, 3 phase for ZONE 2 – Temperature Class T3 and Gas Group IIA;



**GENERATOR 32KW
ATEX ZONE 2 IECex
CERTIFIED**

Fuel Consumption 8LPH
32KW, 3 phase, 50HZ, 415V, Cont. Duty
44KW, 3 phase, 60HZ, 480V, Cont. Duty
3 Phase 1 x 32amp Plug
Single Phase 3 x 16amp Plugs
210cm x 100cm x 175cm
GMW 2,000kg



**20FT WORKSPACE MODULE
ZONE Rated**

A60 DNV 2.7-1/EN 12079 and DNV 2.7-2 certified designs, CSC plated
6.058m x 2.438m x 2.896m
9000kg



**10FT WIRELINE WORKSHOP
ZONE Rated**

DNV 2.7-1 Certified
4-Part Wire Sling
2438 x 2991 x 2800



**LIGHTS & LIGHTING TOWERS
ZONE 2 Rated**



**DIESEL GENERATOR 250kVA
C9 Zone 2**



SMALL LIGHTING & Power



**HAZARDOUS AREA 3.8kVA
TRANSFORMER**



POWER SPLITTER BOXES



**RECHARGEABLE HAZARDOUS
AREA FLOODLIGHTS**



PROTECTED POWER SPLITTERS



16A EXTENSION LEADS



32A EXTENSION LEADS



63A EXTENSION LEADS



**SAFE ZONE
EXTENSION LEADS**



**HAZARDOUS AREA
LIGHTING PACKAGE**



**EXPLOSION PROOF
HEADLAMPS**



**PORTABLE HAZARDOUS
AREA EMERGENCY LIGHTING**



**HAZARDOUS AREA
TORCHES**



MANUAL PUMPS



**400MM HAZARDOUS AREA
FAN BLOWER/EXHAUSTER**



**300MM HAZARDOUS AREA
FAN BLOWER/EXHAUSTER**



**200MM HAZARDOUS AREA
FAN BLOWER/EXHAUSTER**



HAZARDOUS AREA FAN



**MICRODOCK BUMP
STATION**



**HAZARDOUS AREA
FILTRATION UNIT**



AIR CONDITIONERS



PORTABLE VENTILATION



**SAFE ZONE
PORTABLE DUCTING**



**EX POWERED HEATER
BLANKET**



EX HEATBOX STORE



SMALL LIGHTING & Power



**FLUKE II 900 INDUSTRIAL
ACOUSTIC IMAGER**



**FLUKE 28 II INTRINSICALLY
SAFE DIGITAL MULTIMETER**



**HAZARDOUS AREA
MONITOR**



AIR FILTRATION UNIT



**PORTABLE HAZARDOUS
AREA CAMERA**



**HAZARDOUS AREA
FLOODLIGHTS**



HAZARDOUS AREA IPAD



POWER SPLITTER TOWER



**VX-820 COMPACT SIZE
PORTABLE RADIOS**



VENTURI CONES



**FLUKE 435-II POWER QUALITY
AND ENERGY ANALYSER**



**FLUKE TI480 PRO
INFRARED CAMERA**



**PORTABLE HAZARDOUS
AREA LIGHTING TOWER**



**HAZARDOUS AREA
POSITIVE PRESSURE**



**FIXED HAZARDOUS
AREA CAMERA**



**MICROCLIP XT II PORTABLE
GAS MONITOR**



**HAZARDOUS AREA
TRANSFORMERS**



**FLUKE 771 MILLIAMP
PROCESS CLAMP METER**



**FLUKE PACK30 PROFESSIONAL
TOOL BACK**



**MICROCLIP XL PORTABLE
GAS MONITOR**



**FLUKE 368 FC LEAKAGE
CURRENT CLAMP METER**



**FRAMED POWER
SPLITTERS**



CONTAINERS (DNV Rated) & Tanks



DNV CONTAINERS



20ft MIXING TANK



**20ft HALF HEIGHT SHIPPING
CONTAINER (OPEN TOP)**



20ft SHIPPING (DRY) CONTAINER



PORTABLE MUD LAB



**A60 LAB CONTAINER
OFFSHORE ZONE 2**



**10ft DANGEROUS GOODS
CONTAINER**



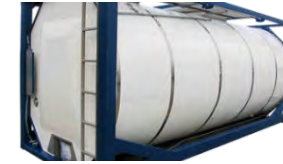
**20ft DANGEROUS GOODS
CONTAINER**



**20ft FLAT RACK
CONTAINER**



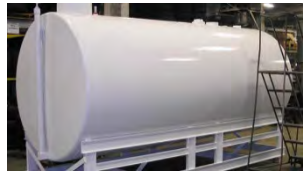
**20ft INSULATED
CONTAINER**



ISO TANK CONTAINER



**LIQUID STORAGE
TANK (1,000L)**



**LIQUID STORAGE TANK
(2,520 L)**



SURGE TANK



**1000 L FREE-STANDING
DIESEL TANK**



**10ft OFFSHORE
CONTAINER**



10ft STORAGE UNIT



**40ft STORAGE CONTAINER
(TWO OPEN SIDES)**



**PROTECTED WORKSHOP
CONTAINER**



**10ft OFFSHORE
CONTAINER**



**40ft STORAGE CONTAINER
(ONE OPEN SIDE)**



**4FF SELF-BUNDLED
FUEL TANK**



**MINI OFFSHORE
CONTAINER**



**HIGH-CUBE 20ft
CONTAINER**



exee.com.au

GENERATORS

(Power Distribution)



AUTOMATIC LOAD BANK

When installed with a corresponding generator, the load bank will prevent wet stacking, cylinder bore glazing as well as reducing emissions. 100kW rating, IP55



550 KVA GENERATOR

550kVA enclosed diesel generator with full electrical protection and emergency stop functionality. Engine manufactured by Cummins. 5106mm x 1553mm x 2447mm



550 KVA GENERATOR

550kVA enclosed diesel generator with full electrical protection and emergency stop functionality. Water cooled to maintain optimal temperature. Genset has full ISO 8528 certification. Generator has multiple outputs to choose from. 415/240V output.



250 KVA GENERATOR

250 kVA enclosed diesel generator with full electrical protection and emergency stop functionality. Engine manufactured by Cummins. 50Hz 3581mm x 1360mm x 2170mm



60 kVA HAZARDOUS AREA GENERATOR

The unit, designed and certified to comply with ATEX Directive 2014/34 /EU, is an ideal support package for all offshore well service and maintenance operations, capable of directly supplying both 415v 3PH and 240V 1PH (50hz) without additional transformers or junction boxes.



110 KVA GENERATOR

This cost-effective 100 kVA generator will reliably meet any power requirements your equipment may have. Australian designed for rugged climates. 3200 x 1100 x 1470.



8.8 KVA GENERATOR

Small generator capable of producing 8.8kVA. Has 3 outlets rated for 15A and 230V at 50Hz. Our generator sets are compliant with all Australian Standards. In built safety devices allow for a full stop at any time for use in an emergency. 3 x 15A, 230V outlets.



175 KVA GENERATOR

175 kVA enclosed diesel generator with full electrical protection and emergency stop functionality. Engine manufactured by Cummins. 4209mm x 1130mm x 2227mm



825kVA GENERATOR

825 kVA generator
Diesel fuelled
Weight: 11300kg
5800mm x 2250mm x 2580mm



150 kVA HAZARDOUS AREA GENERATOR

150kVA suitable for offshore and onshore hazardous areas in accordance with AS/NZS 60079 series and the IECEx international standards.



exee.com.au

SOLIDS CONTROL & MUD MIXING



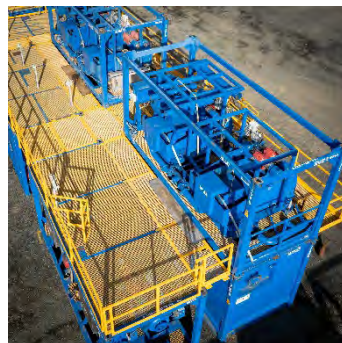
FLUID MIXING SYSTEM

include the following matched components: mixing system, 50 bbl tank, power unit, roll guns, hoses and centrifugal pump and mix hopper
The centrifugal pump powers the process, turning a 1,000-gallon tank in approximately two minutes.



MIXING HOPPER

Mission 6" Venturi Hopper is equipped with a standard 2" nozzle.
As shown, with 80 feet of head for the inlet 531gpm.



BRAND HD4800 MUD Cleaning Drilling Fluid System

Average operating capacity: 1,000 – 1,2000 gpm. Includes: 8 shaker skids (4x2 shakers per skid) with (desilter/ desander; x 4 Agitator mixing tanks with x2 pumps x 4 recycle tanks with Mission Magnum centrifugal pumps and valves per tank. x 2 Pump Skids with x4 Mission Magnum centrifugal pumps and valves per unit.



DESILTERS

Brandt Twin 10 Cone 4" Desilters are rated with total capacity of 1300gpm. Each Cone capacity is 60-65gpm at 75 feet of head pressure.



SHALE SHAKERS

The SCM Shaker provides excellent conveyance of solids. With shaker performance being characterised as a product of screening area, the SCM Shaker has one of the highest performance ratings in the industry.



CENTRIFUGE DE-1000 FHD

Proven in the field, this machine has processed twenty pound per gallon weighted oil field mud as well as flocculated ultrafine solids slurries. The bowl assembly is capable of rotating at any speed from 0 to 4000 RPM, producing an internal centrifugal acceleration more than 3000 G's.



MUD MIXING SYSTEM

A complete mud mixing system includes mud mixing tank, mixing pump, mixing hopper, mud agitator, pipeline and valves, etc.. AIPU supply only mixer also with mixing pump and hoper sits on a skid for economy option.



MUD COOLER & MUD BUCKET

The cooling system, featuring Alfa Laval plate-type heat exchanger for cooling the drilling fluid for high pressure/high temperature wells, for increased safety. The mud bucket clamps around the pin and box ends of the drill pipe creating an airtight seal.

CABLE HAULING EQUIPMENT

Spoolers/reelers



LAY FLAT HOSE REEL

Pallet-sized for easy transport, this system is modular for stacking and storage. 1000m Ø reels. Single spool capacity up to 150m length.



8T AIR SPOOLER

This shaft driven spooler is rated to hold a drum of up to 8,000 Kg in weight. The shaft is lifted out of the cradle on the spooler & the inserted through the centre hole of the drum with the drive pins inserted into the flanges. This unit requires a suitable air compressor.



**CABLE DRUM STAND
(2T-20T)**

A Cable Drum Stand designed and engineered to hold cable drums. Certified and compliant with Australian Standards



25T HYDRAULIC SPOOLING WINCH

- Overall Dimensions 4640mm long x 2130mm wide x 2480mm high
- Maximum Reel Dimensions 3300mm diameter x 2400mm wide
- Tension Capability 2.9 Tonnes/Metre



SPOOLER WINDER SYSTEM

This is a mechanically driven system, manually controlled, this unit will greatly assist in the neat spooling of line onto a drum, which can be extremely difficult at times. The unit is an add on item and can be easily removed when running into the well. Spooler winder storage unit available as an optional extra.



CABLE DRUM JACK

Drum jack, pair, 4000kg WLL, Min/Max Drum Dia. 1.4/2.4m wheels, 2 spindles, ASSY



60T SPOOLER

This is a 60t hydraulic powered traction winch, the winch is suitable for spooling/tensioning applications. It will operate in constant tension in both directions. High capacity back tension during wire rope installation this will save time and money.



REEL CABLE DRUM ROLLER

Single Sleever DRUM ROLLER, Capacity - 1000kg. Net Weight - 30.8kg



SHEAVE WHEELS

We supply three different types of Sheave Wheels to go with our Spooling Units. Our Single / Dual / Triple Line Horseshoe Type Sheave Wheels are ideal for directing Control Line from the Spooling Unit into the Well.



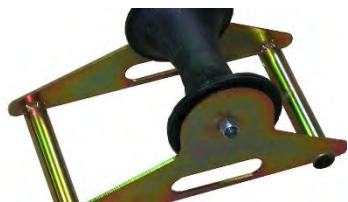
UMBILICAL REELERS

ExEE can fully customise reeler specifications to your required work scope. We can manufacture systems to accommodate umbilicals in excess of 3,000 metres which integrate multiple cores including; multiple hydraulic lines, chemical, electrical power, fibre optic and signal cores.

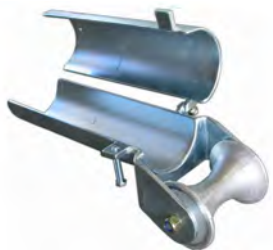


exee.com.au

CABLE PULLING EQUIPMENT **Rollers & Guides**



CABLE TRAY ROLLER



SPLIT LOCK GUIDE



90-DEGREE ROLLER FRAME



CORNER ROLLER SEGMENTS



BELL MOUTH GUIDE



CABLE TRAY WINDOW ROLLER



MANHOLE TWIN ROLLER GUIDE



OCCUPIED TRENCH ROLLER GUIDES



PIVOTING CABLE BEND ROLLER



CABLE SPOOLER TRUCK

PUMPS, washers & air compressors



SLUDGE SCREW CONVEYOR



NEMO INDUSTRIAL PUMPS (BY SERIES)



NEMO PROGRESSING CAVITY PUMP



DIAPHRAGM PUMPS (2"-3")



WATER PRESSURE WASHER



WASH DOWN GUN



**900 CFM RIG SAFE 150PSI
AIR COMPRESSOR**



HAZARDOUS AREA AIR COMPRESSOR



**HIGH PRESSURE (12500PSI)
WASHER BLASTER**



**X-Air 1,100 CFM/380 PSI
PORTABLE AIR COMPRESSOR**



**D1300HA TRI-AXLE
TOWABLE AIR COMPRESSOR**



**PORTABLE AIR COMPRESSOR
XAS375**



TRANSFORMERS & Transformer Containers



TRANSFORMER 150kVA



**480V TO 440V
TRANSFORMER**



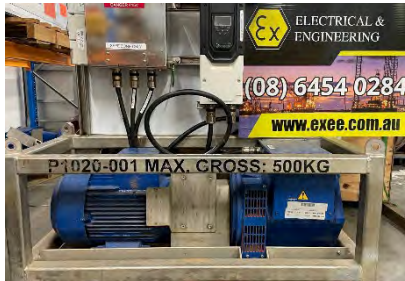
**600V TO 480V TRANSFORMER AND
POWER LINEATOR**



**480V TO 690V STEP-UP
TRANSFORMER**



**125kVA OIL IMMERSED DISTRIBUTION
TRANSFORMER**



50/60HZ FREQUENCY CONVERTER



**480V TO 240/220V DUAL
TRANSFORMER**



TRANSFORMER 1000kVA



**480V TO 690V STEP-UP
TRANSFORMER**



**125kVA OIL IMMERSED DISTRIBUTION
TRANSFORMER**



exee.com.au

FORKLIFTS & spooler truck



WF STACKER

Load Capacity: 1000-1200kg
Lifting Height: 4400mm
Power: 24V/94 – 180Ah
Size: 805 x 692 x 1150



3.5T CT-DIESEL FORKLIFT

Load Capacity: 2000-3500kg
Lifting Height: 6010mm
Engine: Yanmar 4TNE98
3.3L Diesel Tier 3
Tyre options: Pneumatic



5T DIESEL FORKLIFT

Rated Capacity: 5000kg
Lifting Height: 3000mm
Engine: ISUZU 6BG1
Tyre options: Pneumatic
Fork Size: 1220 x 150 x 65



1.5T FORKLIFT

Rated Lifting Capacity: 1600kg
Lifting Height: 3000mm
Core Components: Motor, Gearbox
Battery Voltage: 48V
Battery Capacity: 230Ah
Size: 3040 x 1000 x 2010



9T CT-DIESEL FORKLIFT

Load Capacity: 5000-9000kg
Mast (Lifting Height): 6080mm
Engine: Doosan 5.8 L Diesel Tier 2 or
HMC 3.9L Tier 3
Tyre Options: Cushion, Pneumatic



SPOOLER TRUCK

This spooler Ex84 truck unit is intended for running Control Line into the Well. The cable drums units operate by creating back tension which stop the spool from free running and keeps the line tight. Skid-based, installed right on the 8x4 cab chassis, requires no time for installation & maintenance.



1.6-1.8T LITHIUM BATTERY SCISSOR FORK

- Load Capacity: 800kg
- Reach Stroke: 600mm
- Overhead Guard Height: 2300mm
- Length to fork face: 35 x 100 x 920
- Overall Width: 1090
- Turning radius: 1745



VACUUM Units



CONTAINERISED (10FT) VACUUM SYSTEM RIG-VAC RV-50HP

Flow (ICFM) - 925.8
Speed (rpm) - 1775
BHP at operating - 46.6
The Offshore Rig-Vac Containerized vacuum system has the ability to switch from vacuum loading to discharge for tank emptying
More powerful than a regular vacuum truck.



20ft CONTAINERISED VACUUM SYSTEM RIG-VAC

Rotary Lobe Blower with direct drive and helical timing gear for quieter and stronger operation
Discharge - Universal Silencer 6" SDY (RV-50 HP) / 10" SDY (RV-100 HP) for quiet environment
20 ft DNV 2.7.1 approved Container with doors on both ends and 750 gal (2839 liters) respectively.



exee.com.au



SLURRY BLOWING PUMP SBP60

Slurry Blowing Pump 60 (SBP 60) System is designed to offer a safe and efficient means of containment of all drill cuttings waste from both onshore and offshore drilling operations
Operation is automatic. SBP60 can be wheeled into position under most conditions.
Suction lengths of 10 meters and discharges of 50 meter are achievable with this pump.



VACUUM UNIT SCM-HIPPO

The system contains:
- 114L tank
- Air operated diaphragm pump
- Associated pipework & valves
This Hippo system consist of a robust skid mounted package designed to be centrally located for the reclamation, containment and handling of waste liquids and sludge from both onshore and offshore operations.



VACUUM UNIT MAX VAC RVS-5

Manufacturer - Max Vac
Model number - RV3560
Serial number - 35610
Blower unit: (Manufacturer - Roots)
(Blower pulley diameter - 147mm) (Motor pulley diameter - 280)



CONTAINERISED VACUUM UNIT



CONTAINERISED (10ft) VACUUM SYSTEM RIG-VAC RV-10HP

The Offshore Rig-Vac™ containerized vacuum system is designed to reclaim drilling fluid spillages caused by tripping, pulling wet strings or accidental spillage. It can also be used for other waste stream spillages such as wastewater or drill cuttings. The cleaning of ditches, cellars and sumps plus the skimming of pits and cuttings boxes is also possible.



VACUUM UNIT MAX VAC RVS-00044

This Vacuum can be used for other waste stream spillages such as wastewater or drill cuttings. The cleaning of ditches, cellars and sumps plus the skimming of pits and cuttings boxes is also possible.

OUR CAPABILITIES:

<https://www.exee.com.au/ex-rentals/>

In addition to above listed categories Ex Electrical & Engineering acts as a 3rd party buyer for:

- Safety
- Clothing & Footwear
- Welding
- Cutting & Abrasives
- Drilling & Threading
- Power, Pneumatic & Engine Powered Tools
- Tools
- Fasteners
- Workshop, Automotive & Power Transmission
- Material Handling & Storage
- Janitorial & Hygiene
- Tapes, Packaging & Office Supplies
- General, Building & Hardware Products
- Electrical & Lighting
- Lubricants, Chemicals & Paints
- Lubrication, Fuel Equipment & Flow Control
- Hose, Pipe & Fitting
- Oil & Gas



ELECTRICAL &
ENGINEERING

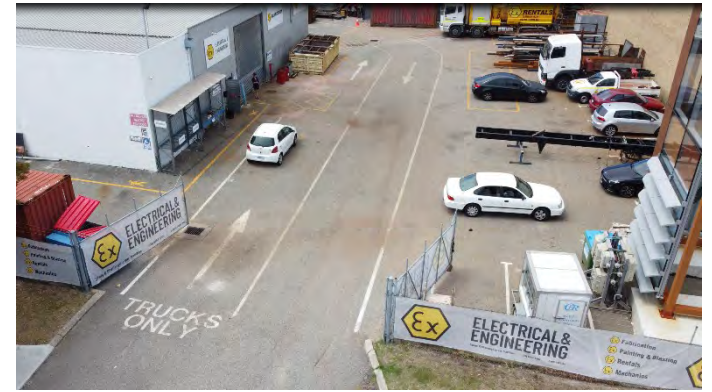
OUR VALUES:

- SERVICE – we are all here to serve - it is what we do.
- ACCOUNTABLE – we hold ourselves accountable for our words, decisions and actions.
- TRUSTWORTHY – we do all we can to earn each other's trust.
- EMPOWERED – we are empowered to do the little things for each other to do the little things for the customer.
- OPEN – we are open to change and new ideas; we openly share our point of view and are open to the views of others.
- THRUTHFUL – we are always honest and speak the truth, even when it is uncomfortable or inconvenient to do so.
- INFORMAL – we respect hierarchy but enjoy informally in all our dealings.
- DEDICATED – our team works hard to deliver the best deal everyday.
- MODEST – we celebrate our success amongst ourselves, and are not boastful.

<https://www.linkedin.com/company/ex-electrical-pty-ltd>



GET IN TOUCH



PHONE

+61 (08) 6454 0284
0499 144 077 (Graeme)
0 405 439 787 (Travis)
info@exee.com.au



ADDRESS

Head office: 231 Adelaide
Terrace, unit 19, Perth , 6000
Workshop: 1D/1 Trandos
Road, Neerabup, WA 6031

www.exee.com.au
[https://www.linkedin.com/company/
ex-electrical-pty-ltd/](https://www.linkedin.com/company/ex-electrical-pty-ltd/)

